

DIRTY PALETTE

A newsletter published by the Art Guild of Pacifica Nov 2010

The Art Guild of Pacifica Presents:

art OPEN

2010 Pacifica Open Walls/Open Studios

Opening Dec 3 at 7 pm!

2010 BAY AREA ANNUAL

www.artguildofpacifica.org



Cynthia Rettig "Hanging Uniforms" from the Nature Series

If you were accepted in this year's Bay Area Annual Exhibition you deserve a round of applause and maybe even a standing ovation. Of the 401 entries and 137 applicants, Juror Betti-Sue Hertz, Director of Visual Arts at Yerba Buena

Center for the Arts in San Francisco, selected a total of 57 artworks by 39 artists. This is a great measure of the high quality of art that is on display.

Of those 39 Bay Area artists, four were members of the Pacifica Art Guild, including photographer and Pacifican Cynthia Rettig who has on display two black and white silver gelatin prints. My favorite, the *Hanging Uniforms*, a set of four suspended lifeless garments that somehow manages to evoke macabre emotions of past lives and death. Cynthia's other entry, *Decorative Screen*, also from her Nature Series, is a print of an ancient battle scene, but it's the folding

trptych nature of the screen and what you can't see hidden behind that screen that draws me into the image.

Another AGP member with two entries in the exhibit is Jean Lannen. Jean's art piece on stretched canvas, titled *Her First*



Jean Lannen "Her First Camera"

Camera, a surrealist image whose eyes are off the canvas makes me wonder if the camera has become her new way of seeing. In Jean Lannen's other submission, *The Witch's Ruby Slippers*, we are transported to an artist version of the classic Wizard of Oz and we receive a poignant message that we have always had the power to go home.



Gale Frances "Don't Ask, Don't Tell"

Some artists just have a knack of bringing to their audience pieces of art so timely that it shocks and awes the viewer. Gale Frances is one of those artists. In her piece, *Don't Ask, Don't Tell*, she

shows us a 15th century engraving, complete with strategically placed fig leaves and four simple words of text that announce one of the highly controversial topics in today's news. *Continued on page 2*

AGP BOARD ELECTIONS!

A reminder from AGP President Kathy Miller that AGP Board Member Elections will be here before you know it and the President's 2-year term will end. The election will be held March 27, at the second general meeting of the calendar year. If you or someone you know is interested and would like to hold one of these very important positions, please contact Kathy Miller or Nancy Russell. 650-355-1894



Jan Hanway "Tissue on Trees"

Bay Area photographer Jan Hanway has been creating powerful black and white images for years, and in her *Tissue on Trees* print she presents us with a view into her world of experimental print processing with this haunting image of trees covered in what appears to be a web-

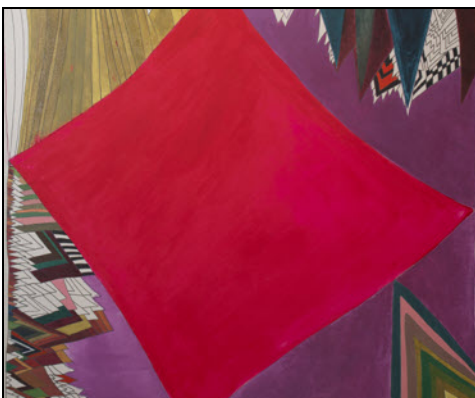
like veil. Jan shows us that she is surely a master of darkroom techniques.

In Leigh Radtke's piece, *Suicide Barbie Silhouette II*, the viewer is left wondering what has brought this icon to such a self-serving end. Whatever the circumstance, I am drawn to the simplicity and emotional effectiveness of this recycled portrayal.



Leigh Radtke "Suicide Barbie Silhouette II"

Ms. Hertz chose four pieces for the Juror's Award. Kimberly Rowe, a Berkeley artist, was awarded for her acrylic and marker on board piece *Flying Buttress*.



Kimberly Rowe "Flying Buttress"

Laurel Nathanson received the award for her delightful piece titled *Preppy Cluster*, a colorful work of mixed media.

Victoria Legg, another Berkeley artist,



Laurel Nathanson "Preppy Cluster"

won the Juror's Award for her acrylic and mixed media piece titled *Sea's Anarchy*, a stately seascape of bold shape and texture.

In the Main Gallery, you will find San Jose artist Emma Harris-Sintamarian's delightfully detailed gouache and ink on paper work *Panta Rei*. To fully appreciate her piece you must stand before its presence in the Main Gallery.



Victoria Q. Legg "Sea's Anarchy"

The show runs through November 21.

Michael Risenhoover, Editor



Emma Harris-Sintamarian "Panta Rei"



[Visit our Facebook page and LIKE US!](#)

CCA ALUMNI EXHIBITION

The California College of the Arts Alumni Association Exhibition runs through November 21 in the East Gallery. The Alumni Association exhibits two to three times a year in public spaces throughout the Bay Area. The Sanchez Art Center is proud to be a part of this amazing exhibit.

The exhibit was juried by Philip E. Linhares, Chief



Michael Hall "Group"

EAST GALLERY

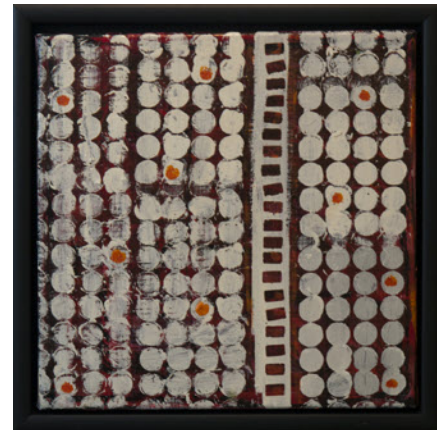
Curator of Art at the Oakland Museum of California and was curated by M. Victoria Vargas. The show contains 25 works by 25 artists from all over the United States and the Netherlands.



Clark Gussin "Even Song"

The CCA Alumni Association constitutes a remarkable network of over 15,000 professionals working in art, architecture, design, writing and a range of related

fields. Noted alumni include painters Nathan Oliveira and Raymond Saunders; ceramicists Robert Arneson, Viola Frey, and Peter Voukos; filmmaker Wayne Wang; conceptual artists David Ireland and Dennis



Dori-ann Steinberg "Dots Matrix"

Oppenheim; and designers Lucille Tenazas and Michael Vanderbyl. This is a truly an exhibit that you don't want to miss.

Art Guild of Pacifica 2011 Exhibits in West Gallery

Jan 14-Feb 13	Self-Portraits
Feb 25-Mar 27	Element
May 27-Jun 26	Reflection
Jul 8-Aug 18	Flight
Oct 14 - Nov 20	Annual Members Show
December TBD	Open Walls/Studios



Stan Taft "Roma Tree 7"



ANNOUNCEMENTS

Board Member Elections • AGP Board Member elections will be held March 27 during the 2nd meeting of the 2011 calendar year. If you are interested in becoming a board member or would like to nominate someone contact Nancy Russell or Kathy Miller. 650-355-1894

The AGP Web Site • Links to members' web sites are available. To have yours added click [HERE](#). If you don't have a web site but would like one, JT Morrow now offers very affordable web designs. Call JT at 650-355-7899 or email him [HERE](#).

AGP Apparel & Merchandise • Clothing, tote bags and aprons with the Art Guild Logo on our web site, www.artguildofpacifica.org.

Open Studios/Open Walls • The show is shaping up to become one of the best! Opening Reception Dec 3 at 7 pm. Visit the Open Walls web site for all the information, www.pacificapenstudios.com.

Sanchez Stained Glass Artist • Searching for new space (lease expiring). I need about 500 sq ft for around \$1 per sq ft. Any ideas? Contact Gaila Jennings at 650-738-1157 or gjennings@artteach.com.

Mary Harris • PCT26's Footprints: "Mary Harris at Shelter Cove" Wins Wave Award for Pacifica Historical Society. The half-hour documentary featured Mary, her artwork, and her wonderful natural surroundings. [The Alliance for Community Media](#).

ARTISTS' SHOWS / WORKSHOPS

JENNIFER ALPAUGH • “Art of Compassion”, the 4th Annual Doctors Without Borders Art Auction at the Kelly Street Gallery, 751 Kelly Street, Half Moon Bay. The gala reception is Nov 13 from 6 to 9 pm.

<http://kellystreetgallery.com>

FOGBELT STUDIO • 18th annual Holiday Arts & Crafts Sale - Dec 3 Fri - 12 noon to 8 pm, Dec 4 Sat - 10 am to 6 pm, Dec 5 Sun - 12 noon to 6 pm. Wonderful handmade works by 28 artists / craftspeople. Free entry, refreshments, and door prizes. 2528 25th Ave (Ulloa / Vicente), San Francisco, Kathy Dybeck - fogbeltkd@aol.com - www.fogbeltstudio.com or call 415-244-8402.

GALE FRANCES • “Something for Everyone: The Art of Gale Frances”, an exhibit at the Paul Strom Salon in Rockaway Beach. 450 Dondee Way #8, in Pacifica.

<http://www.paulstrom.com>

AMY SULLIVAN • Art and Inspiration-1st Friday of each month. A group for artists and others interested in the creative process for inspiration & personal growth. No previous art experience necessary. Healing Arts Studio, 2311 Palmetto Avenue, #E-1, Pacifica, 650-355-1133 or email info@amysullivanmft.com.

ANN WEST • Group show, “Here and There”, Hang Art Gallery, 567 Sutter Street, San Francisco, Mon-Sat 10-6, Sun 12-5.

ALAN FIRESTONE • Group show, “It’s in the Pulp: The Art of Papermaking in Santa Cruz”, at the Museum of Art & History at McPherson Center, Santa Cruz, Aug 7-Nov 14.

JUDE PITTMAN • Solo show, Mildred Owen Concert Hall, 1220 Linda Mar Blvd, Sat Nov 20, 7:30 - 9:00 pm. Show runs through Dec.

<http://www.judepittmanstudio2.blogspot.com>

CHERI HALSEMA • Cheri’s painting *Wave 1* has been accepted for presentation in the 2010 PSWC Membership Show: <http://www.pswc.ws/html/events.html>.

MYLES KLEINFELD • Myle’s piece *9 Dots* won third place in a National Juried Show curated by Nat Trotman of the Guggenheim Museum of Art in NYC. Only 60 works from 1180 entries were selected. Show opens Oct 23, at the Barrett Art Center.

M. VICTORIA VARGAS • Mixed media solo show, Reception: Dec 8, 5 pm to 8 pm; show runs through Dec. Brisbane City Hall, 50 Park Place, Brisbane.

DIRTY PALETTE

Art Guild of Pacifica
1220 Linda Mar Blvd
Pacifica, CA 94044

650-355-1894

www.artguildofpacificca.org